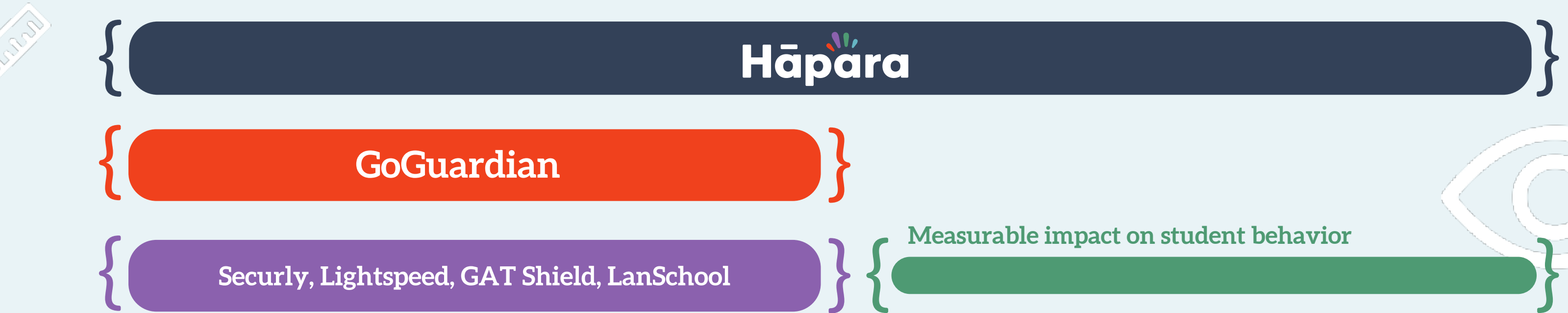


Are you still closing tabs?



Storming

Closing tabs

Teachers are provided with a monitoring tool, and proceed to close off-task browser windows. Students may be unaware that their browsing is being monitored, and are displeased to find that they are monitored.



Conforming

Locked down



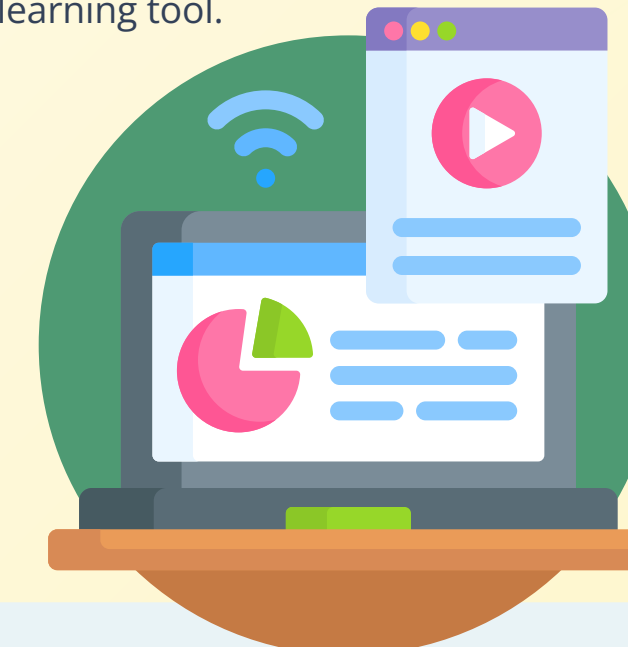
A new classroom dynamic is taking hold. The teacher has grown accustomed to closing browser windows, and students are aware that they are being watched. Teacher tab closing exists, and classroom management is dependent on catching and redirecting off-task or inappropriate browsing behavior. Students are aware they are being watched. Student behavior is only changed through punitive and coerced action through limiting accessible websites, and forcibly closed tabs with off-task behavior reporting used for disciplinary reasons.

Hand held

Transforming

Structured learning

Here the classroom dynamic begins to change, for the better. Classrooms in this phase are undergoing a gradual release of teacher control to support student agency and independent learning. The teacher has largely moved beyond the role of Tech Warden and can return to a pre-1:1 role as that of a . . . teacher! Students have been educated on the proper use of technology in the classroom, and use their computer as a learning tool.



Semi-independent

Performing

Independent learning

At this phase, students have attained the ability to stay on-task during class time. The cat and mouse game of monitoring has given way to the tool being used to aid learning.

